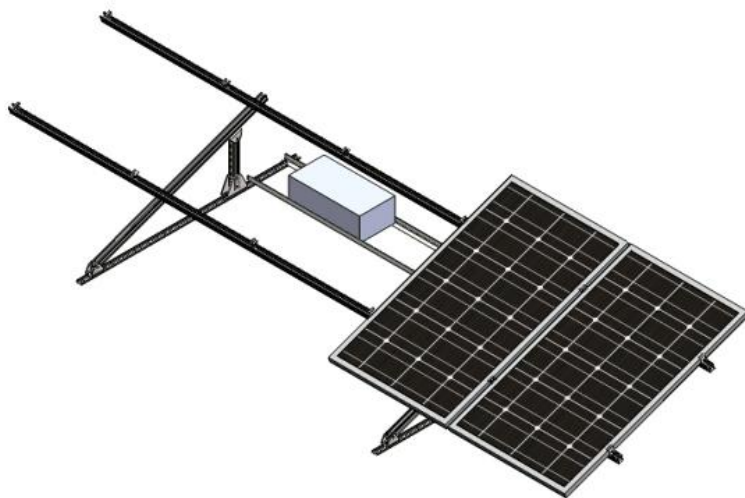


BFR1(Ballasted Flat Roof PV Mounting System 1):



Technical Data and Requirement

Technical Data	Requirement
<ol style="list-style-type: none">1. Wind Load: 34m/s2. Snow Load: 0.4KN/m²3. Span Range: 2.3m~3.1m4. Warranty: 10 years5. Install Angle Error Range: $\pm 2^\circ$.6. Adjustable Angle: 10° 、 15° 、 20° 。	<ol style="list-style-type: none">1. Application: Flat Roof2. Rail Material: Hot galvanized steel (Q235B)3. Screw Bolt、 Screw Nut Material: Hot-dip galvanized technology.4. Solar Panel: Framed or Frameless5. Installation Direction: vertical or horizontal6. Design Standard: GB50009-2012, DIN1055, IBC2006, AS/NZS1170。